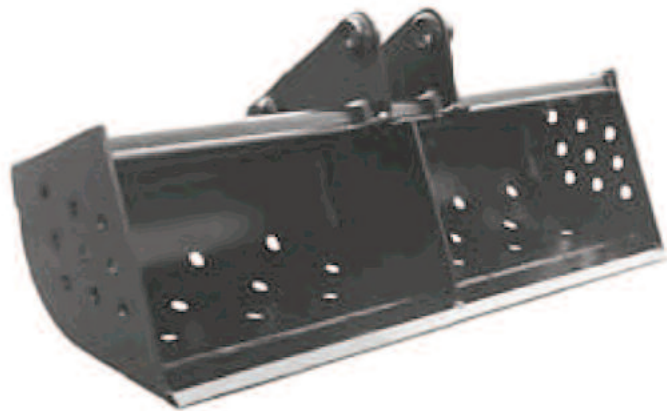




JCB BUCKETS

Genuine JCB Buckets are available in a wide variety of styles to suit many applications. The choice of widths and capabilities increases versatility while their unique profile improves performance and maximizes breakouts. Genuine JCB Pins and Wearparts complete the package, providing increased durability and extending the working life of the bucket, helping to further reduce operating costs.

JCB Ditching Buckets are used for finish grading, backfilling and ditch cleaning.



FEATURES

- Full width dual box section gives added strength and rigidity.
- Spring steel bushings prevent excessive wear to the bucket bosses.
- The addition of grease zerks enables regular lubrication to be carried out, further improving the working life of the bucket and pivot pins.
- Central internal reinforcement plate gives added strength and rigidity.
- Toeplate is ready drilled to allow fitment of a bolt on toeplate.

Part Number	Width	Capacity	8008	8018	804	8025	8030/ 8035	8040/ 8045	8052	8055	8060	8080
522/06400	30"	2.00 ft ³	•	•								
522/00900	35"	2.75 ft ³		•								
522/01600	39"	3.07 ft ³		•								
522/07000	48"	8.36 ft ³			•		•					
980/90506	38"	5.07 ft ³				•						
335/10270	48"	4.20 ft ³						•		•		
980/86061	60"	7.70 ft ³							•		•	•