

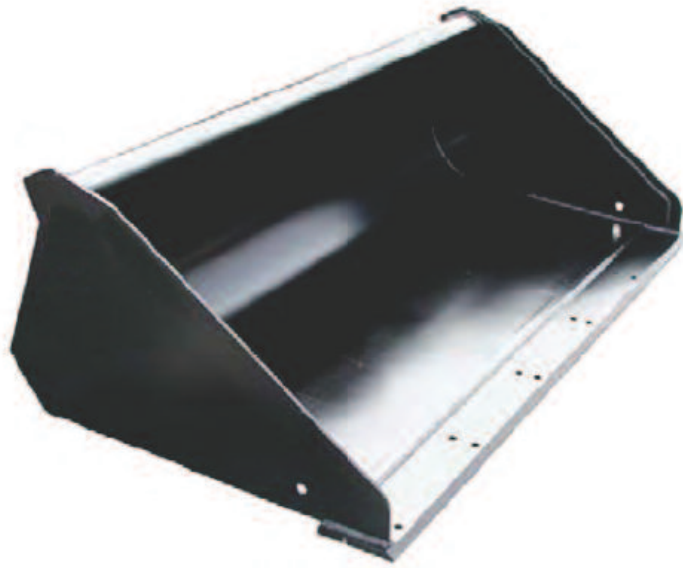


JCB BUCKETS

Genuine JCB landscape buckets are ideal when cutting edge visibility is important. Applications for these buckets include grading, foundation backfilling, clean up work, spreading material and transporting material.

FEATURES

- Long bottom for improved visibility of front cutting edge.
- Pre-drilled front cutting edge to accept bolt-on reversible front cutting edge.
- Radius moldboard for improved material loading and unloading.
- High strength, abrasion resistant front cutting edges.
- Buckets designed with high strength materials for long life and durability.
- Abrasion-resistant wear bars.



Part Number	Width	Accepts Teeth	Capacity	160	170	180	180T	190	190T	1110	1110T
328/00282	62in (1575mm)	6	14.7ft <sup>3</sup> (0.416m <sup>3</sup> )	•	•	•					
328/00284	66in (1676mm)	6	14.1ft <sup>3</sup> (0.399m <sup>3</sup> )	•	•	•					
328/00286	68in (1727mm)	6	15.7ft <sup>3</sup> (0.445m <sup>3</sup> )					•		•	
328/00613	72in (1829mm)	7	16.7ft <sup>3</sup> (0.473m <sup>3</sup> )					•		•	
328/00616	78in (1981mm)	8	18.1ft <sup>3</sup> (0.513m <sup>3</sup> )					•		•	
328/00683	84in (2134mm)	8	20.4ft <sup>3</sup> (0.578m <sup>3</sup> )					•		•	



Heavy - duty bolt on Toothbar.



Bolt-on Teeth



Reversible bolt-on cutting edge.

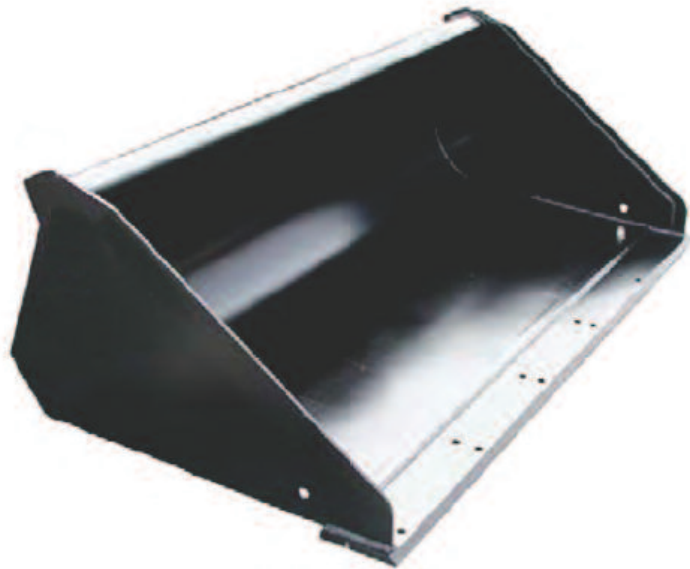


JCB BUCKETS

JCB genuine dirt / general purpose buckets are recommended where maximum breakout performance is required. Applications include general excavation of virgin soil such as digging basements and swimming pools, transporting material, backfilling, and grading.

THE BEST BUCKETS IN THE BUSINESS

- Short-bottom design promotes higher front edge breakout force.
- Pre-drilled front cutting edge to accept bolt-on reversible cutting edge, bolt-on teeth or bolt-on toothbar.
- Radius moldboard for improved material loading and unloading.
- Buckets designed with high-strength steel.
- High-strength abrasion resistant cutting edge.



Part Number	Width	Accepts Teeth	Capacity	160	170	180	180T	190	190T	1110	1110T
328/00867	62in (1372mm)	6	11.9ft <sup>3</sup> (0.337m <sup>3</sup> )	•	•	•					
328/00868	66in (1676mm)	6	12.8ft <sup>3</sup> (0.362m <sup>3</sup> )	•	•	•					
328/00869	68in (1727mm)	6	13.2ft <sup>3</sup> (0.374m <sup>3</sup> )					•		•	
328/00870	72in (1829mm)	7	14.0ft <sup>3</sup> (0.396m <sup>3</sup> )					•		•	
328/00871	78in (1981mm)	8	15.3ft <sup>3</sup> (0.433m <sup>3</sup> )					•		•	
328/00872	84in (2134mm)	8	16.5ft <sup>3</sup> (0.467m <sup>3</sup> )					•		•	



Heavy - duty bolt on Toothbar.



Bolt-on Teeth



Reversible bolt-on cutting edge.

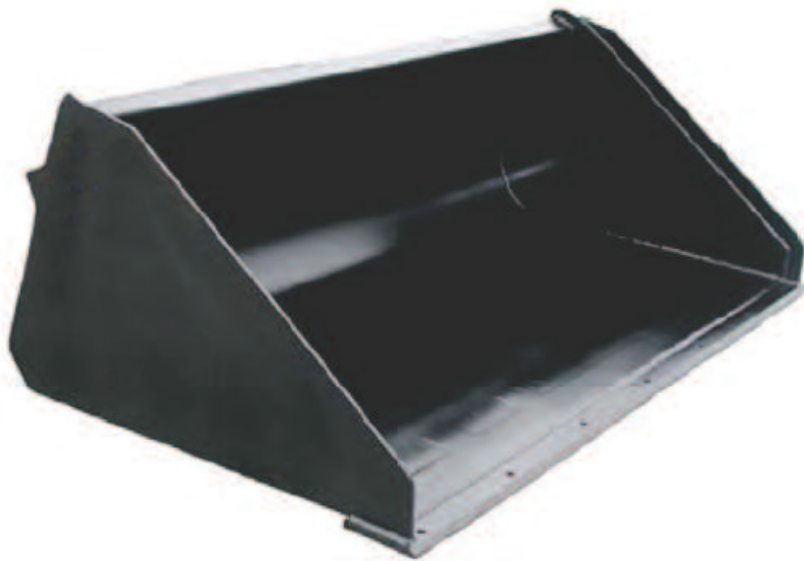


### JCB BUCKETS

Genuine JCB light material buckets are available in a wide variety of styles to suit many applications. The bucket profile is specially designed for lower density materials such as snow, grain, mulch, wood chips etc.

### FEATURES

- Pre-drilled front cutting edge to accept bolt-on reversible front cutting edge.
- Radius moldboard for improved material loading and unloading.
- High strength, abrasion resistant front cutting edges.
- Buckets designed with high strength materials for long life and durability.



Part Number	Width	Capacity	160	170	180	180T	190	190T	1110	1110T
328/00873	66in (1676mm)	23.5ft <sup>3</sup> (0.665m <sup>3</sup> )	•	•	•					
328/00874	72in (1829mm)	25.9ft <sup>3</sup> (0.733m <sup>3</sup> )					•		•	
328/00875	78in (1981mm)	28.2ft <sup>3</sup> (0.799m <sup>3</sup> )					•		•	
328/00876	84in (2134mm)	30.6ft <sup>3</sup> (0.866m <sup>3</sup> )					•		•	



Reversible bolt-on cutting edge.



## JCB BUCKETS

JCB genuine 6 in 1 buckets are ideal for multiple applications such as dozing, backfilling, clean-up, scraping, clamming and use as a bucket.

## FEATURES

- Pre-drilled front cutting edge to accept bolt-on reversible cutting edge, bolt-on teeth, or bolt-on toothbar.
- Radius moldboard for improved material loading and unloading.
- Large clam opening to accommodate the most demanding jobs.
- Reversible bolt-on cutting edge standard for dozer section.
- Low profile for improved operator visibility.



Part Number	Width	Capacity	160	170	180	180T	190	190T	1110	1110T
328/00864	67in (1676mm)	16.0ft <sup>3</sup> (0.453m <sup>3</sup> )	•	•	•					
328/00632	73in (1829mm)	17.5ft <sup>3</sup> (0.496m <sup>3</sup> )					•		•	
328/00633	80in (1981mm)	20.5ft <sup>3</sup> (0.580m <sup>3</sup> )					•		•	



Heavy - duty bolt on Toothbar.



Bolt-on Teeth



Reversible bolt-on cutting edge.



FEATURES

- Heavy duty construction grade for heavy duty applications.
- High clearance swing post design for easier transport loading.
- 180 degree bucket rotation and swing arc.
- Dual cylinder swing with swing speed control.
- Cushioned cylinders.

Specification	328/00624	328/00626	328/00628
Max Dig Depth	9'8"	9'8"	11'1"
Bucket Cylinder Dig Force	5676 lbf	5809 lbf	6167 lbf
Dipper Cylinder Dig Force	2754 lbf	3232 lbf	4160 lbf

Part Number	Dig Depth	Description	Machine
328/00624	9'8"	Backhoe	(160-180T)
328/00626	9'8"	Heavy Duty Backhoe	(190-1110T)
328/00628	11'1"	Heavy Duty Backhoe	(190-1110T)